



**Dextra**  
GROUP PLC

ABOVE AND BEYOND

A leading UK  
manufacturer of  
energy efficient  
lighting

 **MADE IN  
BRITAIN**<sup>®</sup>

[dextragroup.co.uk](http://dextragroup.co.uk)

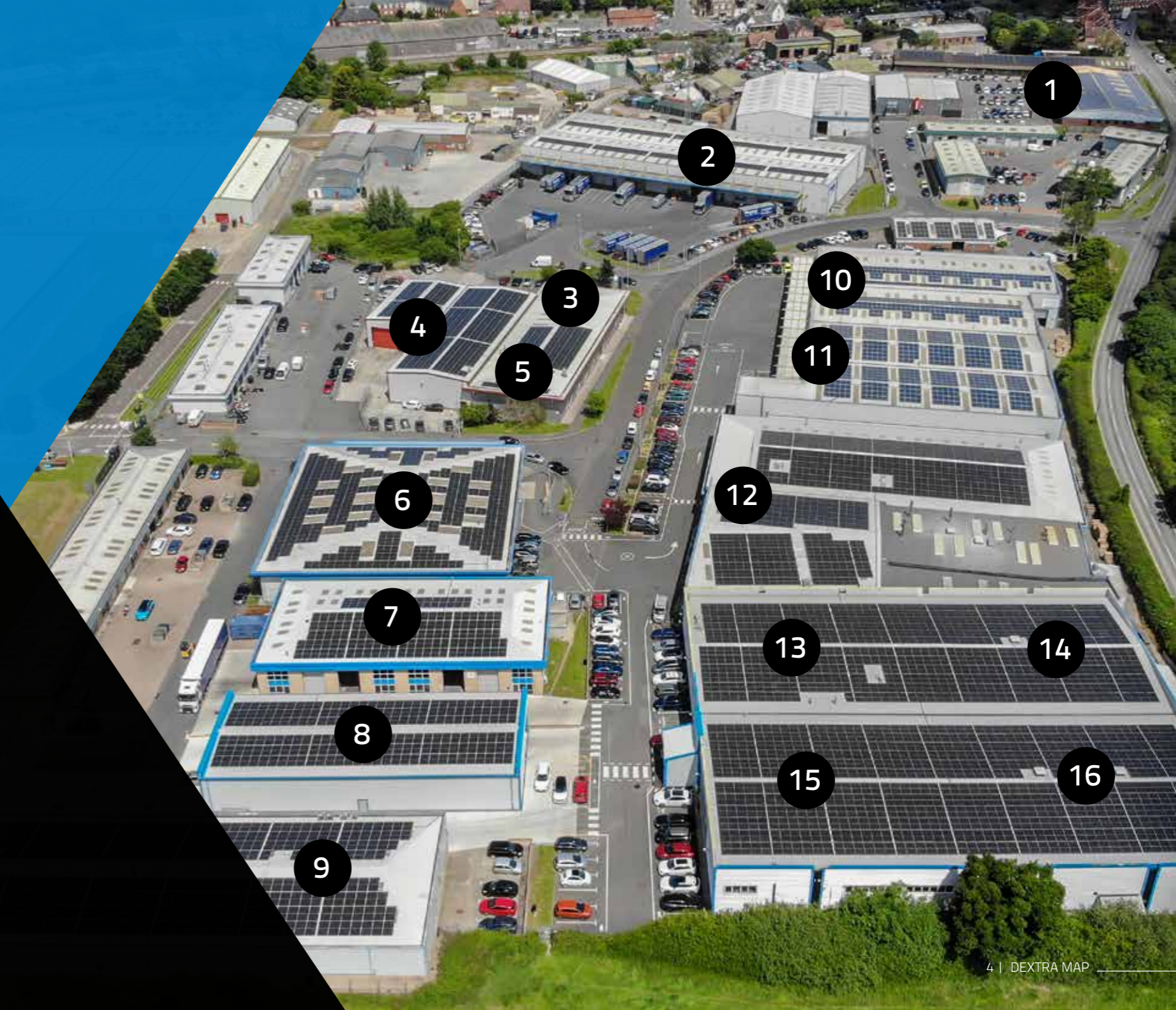


Our home in Gillingham, Dorset

DEXTRA MAP	3
LUMINAIRE DESIGN	5
TESTING FACILITY	7
SALES & VISITOR CENTRE	9
CCT & CRI DEMO ROOM	11
LIGHTING DESIGN	13
SPECIALIST ELECTRONICS UNIT	15
METAL WORK	17
PAINTLINES	19
WIRING & ASSEMBLY	21
ROUTING	23
BOX ON DEMAND & PACKING	27
WAREHOUSE	29
LOGISTICS	31
TECHNICAL SERVICES	33
INVESTMENT IN UK MANUFACTURING	35
SUSTAINABLE MANUFACTURING	37
COMMITMENT TO THE ENVIRONMENT	39
TM65 EMBODIED CARBON	41
TM66 CIRCULAR ECONOMY	43
ACCREDITATIONS & INSURANCES	45
CORPORATE & SOCIAL RESPONSIBILITY	47
EMPLOYEE WELLBEING & BENEFITS	49
GROUP STRUCTURE	50
DEXTRA LIGHTING	51
DEXECO	53
DEXRETAIL	59
DEXRAIL	63
LEDEXTRA	79
DEXRECO	71
DEXSOR	75
LEDEX	77
RUPERT'S QUOTE	81

## OUR SITE - GILLINGHAM, DORSET

- 1 SPECIALIST ELECTRONICS - LED PCB PRODUCTION FACILITY & LIGHTING DESIGN
- 2 TRANSPORT, LOGISTICS AND WAREHOUSING
- 3 VISITOR CENTRE
- 4 VEHICLE MAINTENANCE & 3D PRINTING FACILITY
- 5 BOX ON DEMAND
- 6 MULTI MATERIAL MACHINE CENTRE
- 7 DEXRECO RECYCLING FACILITY
- 8 MULTI MATERIAL MACHINE CENTRE
- 9 TECHNICAL FACILITY / TESTING LABORATORIES
- 10 GOODS IN WAREHOUSING
- 11 MAIN PRODUCTION ASSEMBLY
- 12 MAIN PRODUCTION ASSEMBLY
- 13 METAL STOCK STORAGE
- 14 PAINTLINE
- 15 GROUP SALES, LUMINAIRE DESIGN, ADMINISTRATION
- 16 ALUMINIUM & STEEL PROCESSING FACILITY





## LUMINAIRE DESIGN



We have the latest 3D modelling and photometric design software so our designers are able to achieve a real life visualisation of new product concepts and their capabilities.

It is supported by a rapid prototyping 3D printer and a multi-axis CNC machining centre which enables us to test 'real life' items.



## TESTING FACILITY



Our own laboratories with 2 photometers, 2 integrating spheres, a thermal test chamber and EMC testing equipment allows up to date legislation on all products to be met and passed in minimal time.

The Dextra Group **invest substantial sums into R&D** every year

We own and operate our own **in-house state of the art laboratories**

Photometer, Thermal Test Cage, Impact Resistance, EMC Chamber & two **Integrating Spheres**

Latest **3D modelling & photometric design software** with on site 3D printer and milling machines

Enables us to be completely **self sufficient and react VERY quickly** to our customers needs



## SALES

“ A team of UK based specification and key account managers are supported by internal co-ordinators to manage projects from conception to completion.

## VISITOR CENTRE

“ Our newly renovated Visitor Centre with individual demo areas showcases all aspects of the Group's products.

The fully equipped conferencing facility is situated at the heart of our premises, providing an excellent vantage point over the entire site and is centrally placed for our numerous site visits.





## CCT & CRI DEMO ROOM



The new demonstration suite enables us to provide our clients with a better understanding of the differences between correlated colour temperature (CCT) and the colour rendering index (CRI).

The suite contains two identical bays that are individually controlled. They can each be cycled between 2700K and 6500K in both CRI80 and CRI90 at a range of different pre-set LUX levels. Clients can bring along their own merchandise to place into the bays so that they can visualise and compare their products under a variety of different lighting conditions.

This area is also a showcase for the latest LED innovations from Philips including their Premium White, Premium Colour, Premium Red, Food Warm White and Crisp White COB's. This provides a great opportunity for retailers to gain a deeper understanding of this technology and how it can impact our visual perception of colours and textures.

## LIGHTING DESIGN

Dextra Group's Lighting Design team occupy a specialist centre comprising of office area, control demo room and workshop area and meeting room.

Providing solutions and giving advice to our customers relating to lighting / lighting control and product technicalities. Equipped with the latest high tech computer hardware, we are able to utilise the latest versions of our lighting simulation software and Auto CAD.

Lighting designs, together with lighting control proposals, are presented in Auto CAD with 3D visualisation and full Relux / Dialux lighting calculations ensuring a precise, clear and thorough presentation. Revit files (.rfa) for Dextra luminaires are readily available for download. These files can be used within the BIM environment enabling BIM integration and 3D modelling of Dextra products.





## SPECIALIST ELECTRONICS UNIT

Our five PCB production machines, with the capacity to place 3,000,000 LED chips per week on our in-house designed and made light engines. This brings a new level of flexibility to the design and production of luminaires. The LEDs used in our production offer market leading efficiency, colour consistency and lifetime with 90% lumen maintenance at 60,000 operating hours verified with 10,000 hours of LM80 testing.



## METAL WORK



Our industry leading range of automated punching, lasering, folding and milling machinery gives us a distinct advantage over all our UK and mainland Europe competitors.



## PAINTLINES

Complementing our metal working equipment are two ultra-modern, clean, highly efficient and flexible paintlines using the latest powder booth technology. Colour changing can take as little as 10 minutes.

For both 1K and 2K applications, we also have a R&D, niche manual paintline facility for rapid prototypes in to the field and where necessary small production runs of product.





## WIRING & ASSEMBLY



Our refurbished and re-equipped production space accommodates our extremely high percentage of LED products and is specially designed to support our JIT ability.





## ROUTING



Our high performance automatic CNC router enables intricate profiles to be created in both plastics and alloys. With a flatbed size of 3x2m and able to work with materials with a thickness up to 40mm, this has been a great addition to our manufacturing capabilities enabling us to design and create new innovative lighting and display products.



## BOX ON DEMAND & PACKING

'Box on Demand' equipment linked to our bespoke works order system enables us to tailor the packaging to the individual product or a customer's requirement.

A new equipment upgrade that utilises slot and tab features will negate the need for tape usage, enable boxes to be reused and assist our commitment to reduce the environmental impact of our business operations.



## WAREHOUSE



We have capacity for over 7000 pallet spaces to accommodate a large amount of raw materials and goods awaiting transportation.



IRTE Accredited **workshop**  
the industry standard



## LOGISTICS

Our own **extensive fleet** of liveried vehicles

Delivering across the **UK and into Europe**

**GPS tracking software** providing real time updates

**Out of hours** timed deliveries not a problem

On board Manitou **forklifts on over 50%** of the fleet

Fully equipped **in-house vehicle maintenance facility**

## TECHNICAL SERVICES

Our Technical Services Department deal with any queries that may arise during and after a purchase has been made. We endeavour to provide solutions to ensure complete customer satisfaction.

### What's actually covered?

- Fittings 3 year parts and labour + 2 year parts
- NiCad batteries 1 year parts and labour
- Lithium batteries 3 year parts and labour\*

### What constitutes a failure?

- If the Driver fails
- If the LED card(s) fail
- If the fitting fails in it's entirety

### What's included in the warranty?

- The replacement parts or product
- The labour and labour cost to rectify the fault
- Any access equipment

\*Refer to full warranty information on our website for qualifying products

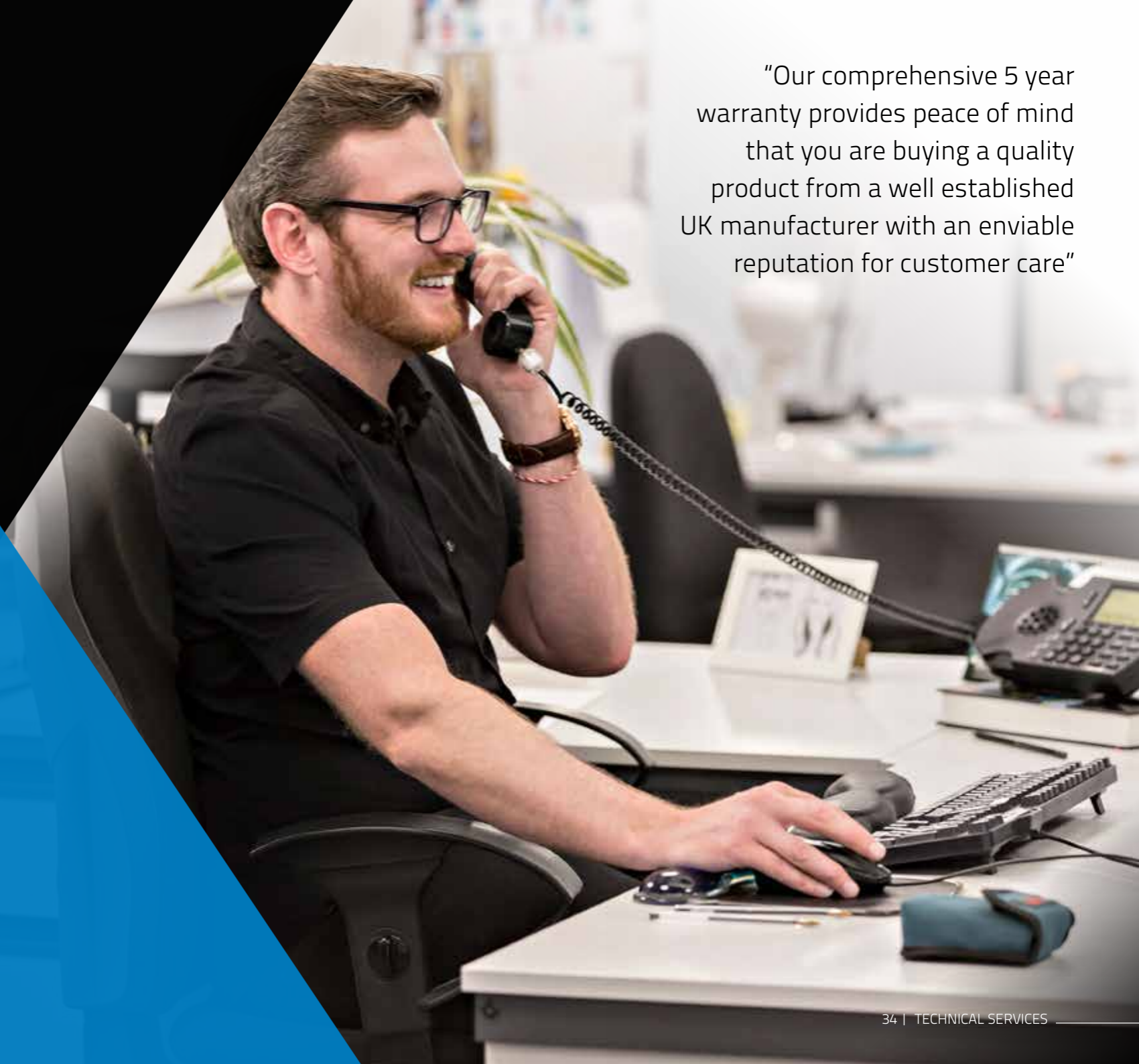
### What's excluded from the warranty?

- Any security cover that may be required
- Initial due diligence check
- External influences (water damage, breakers etc.)

### How does it work, what's the process?

- FM contractor to carry out due diligence check
- Completion of Dextra Site Visit Form
- Dextra will arrange engineer to attend and repair

"Our comprehensive 5 year warranty provides peace of mind that you are buying a quality product from a well established UK manufacturer with an enviable reputation for customer care"





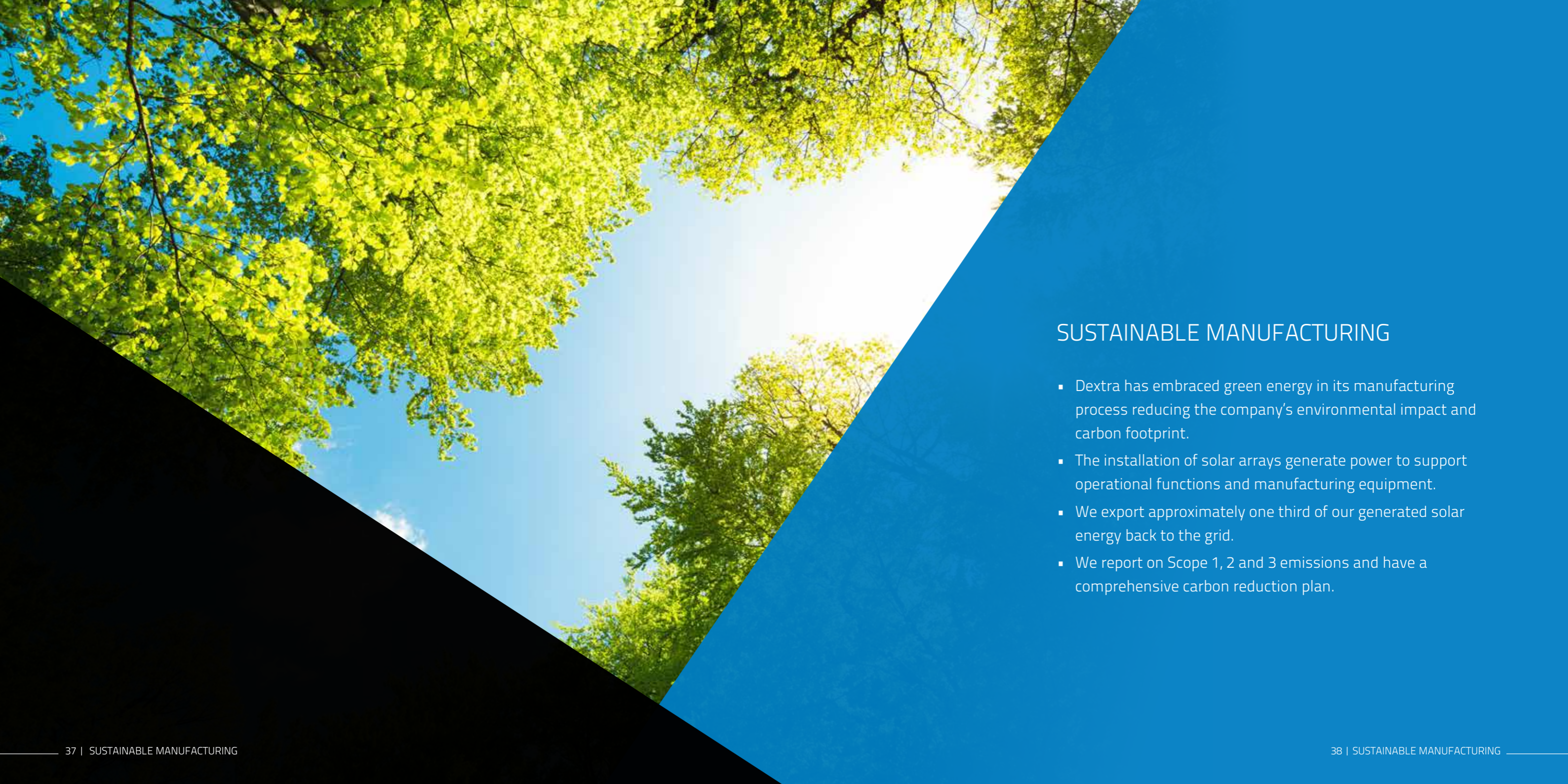
## DEXTRA GROUP CONTINUE TO INVEST IN UK MANUFACTURING



The recent addition of two new Salvagninis with the latest metal working technology, Aluminium Processing and 3D Commercial printing facilities enhances the already impressive array of cutting edge manufacturing equipment. This supports the company's 'just in time' manufacturing ethos and enables the design and manufacture of exciting and innovative new product ranges.

Our commitment to UK manufacturing places the company at the forefront of the British lighting industry.



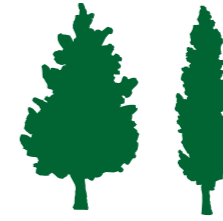


## SUSTAINABLE MANUFACTURING

- Dextra has embraced green energy in its manufacturing process reducing the company's environmental impact and carbon footprint.
- The installation of solar arrays generate power to support operational functions and manufacturing equipment.
- We export approximately one third of our generated solar energy back to the grid.
- We report on Scope 1, 2 and 3 emissions and have a comprehensive carbon reduction plan.



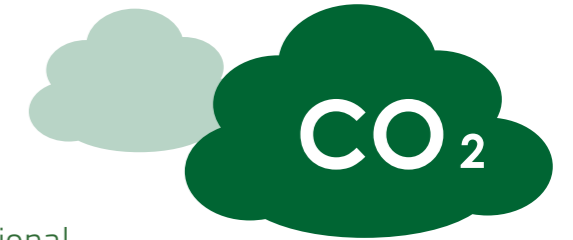
900 acres of woodland and farmland managed sustainably with



48,620 trees planted since 2018

storing

70,087



tonnes of CO<sub>2</sub> whilst capturing an additional 1013 tonnes per annum

Our ambitious tree and habitat planting programme provides **great benefits for biodiversity.**



**Planned management and planting programmes ensure** that these environments not only act as important stores for carbon (as well as continuing to sequester carbon), they are also vitally important to store and clean water and purify the air.



## COMMITMENT TO THE ENVIRONMENT

Despite all adopted sustainable innovations some CO<sub>2</sub> will unavoidably be released as a result of our manufacturing and business operations. In 2018 Dextra Group initiated a number of carbon offsetting measures.

We have added large solar arrays to all of our buildings, generating power to support operational functions and manufacturing equipment. We export approximately one third of our generated solar energy back to the grid.

## TM65 EMBODIED CARBON

TM65 Embodied carbon in building services: A calculation methodology” is the CIBSE standard for calculating the embodied carbon in MEP products with later additions dedicated to luminaires. This standard allows luminaire manufacturers to accurately calculate the embodied carbon in luminaires through the full life cycle of the product from material extraction and manufacturing through lifetime maintenance and end of life disposal.

TM65 does not include operational carbon which can often be far more significant than embodied carbon especially in high wattage luminaires with long operating hours. It is therefore critical to consider both embodied carbon and luminaire efficiency in any carbon calculation, at Dextra Group we ensure our luminaire efficiency is optimised to ensure whole life carbon is minimised whilst also reducing operating costs.

Longevity is also key to minimising embodied carbon to ensure replacement cycles are extended as far as possible. At Dextra Group we use drivers with a life expectancy of 100,000 hours and LED sources with typical lumen depreciation of >L90 at 60,000 operating hours and >L80 at 80,000 operating hours.

We are proud to have produced embodied carbon calculations for every product we manufacture by individual product SKU. This year long project encompasses approximately 20,000 product variants allowing the embodied carbon of your lighting project to be accurately calculated.

“A key aspect of our ability to deliver low embodied carbon luminaires is our UK manufacturing facility based in North Dorset. Our production facilities incorporate a high degree of vertical integration from LED circuit board manufacturing through metalwork processing and luminaire assembly to packaging and transportation”

### TM65 : 2021 Mid-Level Calculation

Printed: 15/10/24 15:51:35

**Dextra**  
LIGHTING

Registered in England  
Registration No. 6460114

<b>Product Code</b>	EPK L35
<b>Product Group</b>	Ecopak Ecopak 1500 3060lm C84
<b>Weight (kg)</b>	2.64kg
<b>Service Life (Lx@Hrs)</b>	TM21: L90>60K HOURS / L80>90K HOURS
<b>Location of Manufacture</b>	Gillingham, Dorset
<b>% Assessed by Weight</b>	100 %

Total embodied carbon calculated in line with Mid Level TM65 calculation method  
**48.08 kgCO2e**

#### Embodied Carbon - Calculation Breakdown

Life Cycle Stage	KgCO2e	% of Total
<b>A1 Material Extraction</b>	28.56	77.22%
<b>A2 Transport to Factory</b>	1.04	2.82%
<b>A3 Manufacturing Energy</b>	2.59	6.99%
<b>A4 Transport to Site</b>	0.10	0.28%
<b>B3 Repair</b>	3.35	9.07%
<b>C2 Transport to Waste</b>	0.03	0.09%
<b>C3 Waste Processing</b>	1.29	3.50%
<b>C4 Waste Disposal</b>	0.01	0.03%
<b>Total</b>	36.98	
<b>With Buffer (1.3)</b>	48.08	

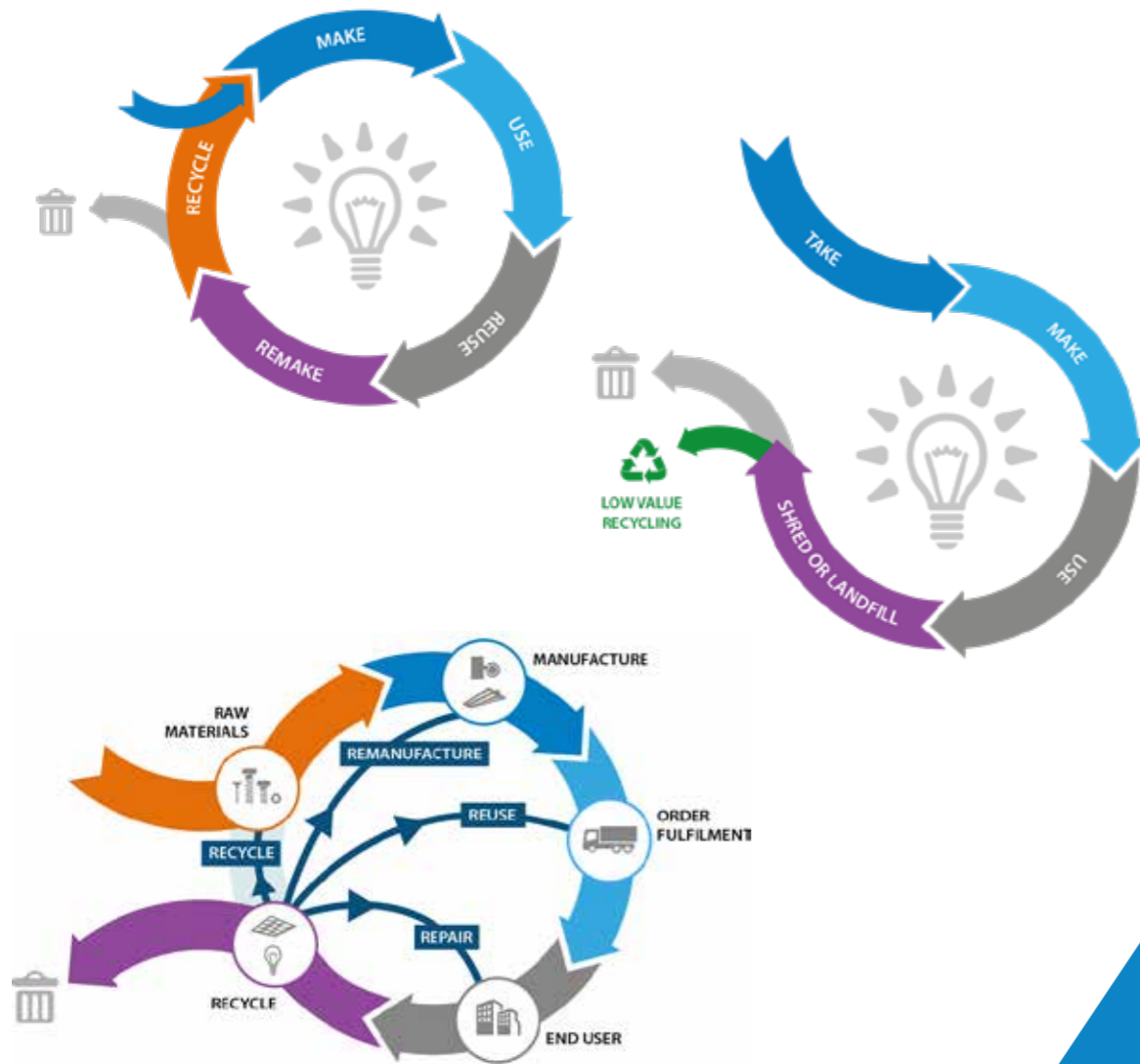


Picture is indicative and may not represent the exact product.

The Ecopak is a highly versatile and efficient range of LED battens utilising high quality components and ensuring reliability and long life combined with superb energy efficiency. With sizes ranging from 600mm to 1200mm, lumen outputs from 2,200 up to 12,000 as well as a range of optic designs including our most popular as high rack and ultra high rack for higher mounting heights the Ecopak can be tailored to suit applications in warehousing and light industry through to circulation and ancillary areas. This flexibility is further enhanced by a range of dimming control gear and integral lithium emergency options. We offer a range of wired and wireless solutions providing localised grouping and control as well as comprehensive wireless solutions allowing emergency luminaires to be centrally monitored.

Quick and simple installation is key to the success of the Ecopak with a two part construction where the luminaire is installed before the one piece gear tray and diffuser is connected using quick release screws.

“In other areas of Dextra Group, since 2008 we have operated Dexreco, our own WEEE registered recycling company, to provide our customers a recycling service for old luminaires as part of our complete service ethos.”



## TM66 CIRCULAR ECONOMY

TM66: 2021 Creating a circular economy in the lighting industry” is the CIBSE standard to guide manufacturers to embrace product designs that are simple to repair allowing their lifecycle to be extended as far as possible, whilst also ensuring that products can be fully upgraded at end of life for multiple life cycles. Any product which is unable to be repaired or reused should be easily recycled with a minimum of energy.

TM66 also encourages environmental responsibility through all areas of the business for example the use of natural and organic materials in product designs, the minimisation of transport miles and the elimination of packaging waste amongst many others.

At Dextra Group our luminaires are all designed to ensure that they are easy to repair with commonly available tools and only include long life components that are easily sourced. We do not use adhesives or sealed luminaire designs and many of our products incorporate a one piece gear tray allowing the product to be easily upgraded at end of life at a minimum labour cost allowing housings to be reused for a second life cycle.

We have carried out TM66 CEAM assessments (Circular Economy Assessment Method) on every luminaire in our range, all of which demonstrated “Definite / substantial progress to circularity”.

Our new product developments are all undertaken with a focus on circularity ensuring that designs not only minimise carbon content and maximise efficiency, but will also encompass all of the design principles of TM66 to ensure their environmental impact is minimised and they can be easily and simply repaired for multiple life cycles in accordance with TM66.

# ACCREDITATIONS & INSURANCES

## Standards

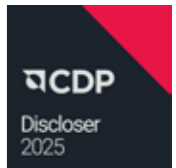
- ISO 9001:2008 Quality Management
- ISO 14001:2004 Environmental Management
- ISO 45001:2008 Health & Safety Management

## Affiliations

- Members of the British Safety Council
- Altius Approved and Members of Sedex
- Constructionline Gold Member

## Insurances

- £40m Employers Liability
- £40m Public Liability
- £40m Products Liability



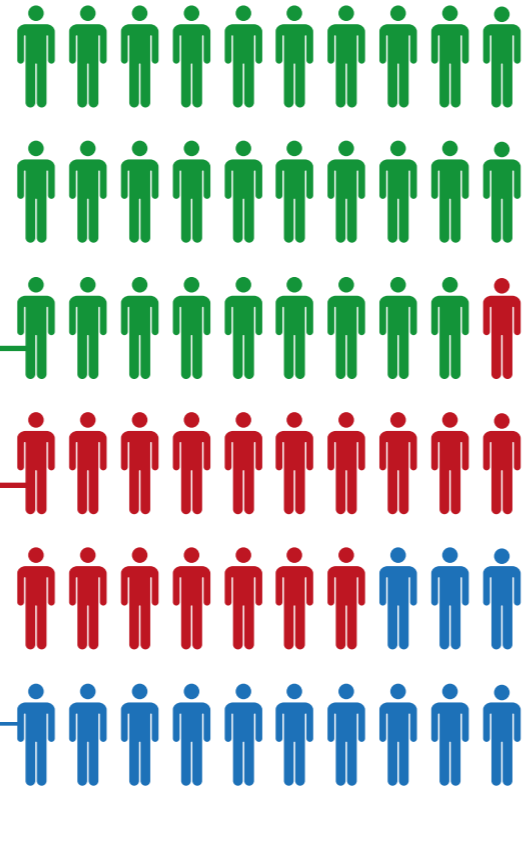
# CORPORATE & SOCIAL RESPONSIBILITY



**CHARITY SUPPORT**  
The company's charity of choice, with annual donations of £25,000 per year

## 6 DEFIBRILLATORS HAVE BEEN INSTALLED ACROSS THE DEXTRA GROUP SITE.

We have registered one unit, located in our main reception in Unit 17, on the National Defibrillator Network which allows the general public to access and use during our office working hours (8.30am to 5pm.)



**29** EMPLOYEES UNDERTOOK SPECIFIC DEFIB TRAINING AND THIS IS NOW COMPULSORY FOR ALL NEW EMPLOYEES.

**18** FIRST AIDERS ACROSS THE SITE, REFRESH TRAINING EVERY 3 YEARS.

**13** MENTAL HEALTH ENGLAND TRAINED MENTAL HEALTH FIRST AIDERS

We support other local organisations that are selected by employees.



# EMPLOYEE WELLBEING & BENEFITS



**Employee wellbeing encompasses** mental, physical, emotional, and economic health, influenced by workplace relationships, resources, and decisions. It is enhanced by a positive culture prioritising wellbeing, motivation, and benefits like financial support and health aids.



**Health benefits** include well-being meetings, life insurance, corporate gym membership discount, Cash Health Plan and Employee Assistance Programme, Cycle to Work scheme and Occupational Health.



**Financial benefits** – increased employer pension contribution, pension workshops and retirement planning

➔ **Apprenticeships available** for new starters and existing employees across various levels and areas of the business.



The parent company that oversees and controls all the Dextra divisions.

### Dextra Services Ltd

The company responsible for production, procurement, design and logistics.



A specialist electronics facility to design and produce light engines with the capacity of 3-4 million LED chip placements per week.



Standard and bespoke energy efficient solutions for commercial, educational, healthcare, airports and Government / local authority sectors.



Unique and bespoke solutions for industrial applications including distribution centres, warehousing, food production, manufacturing, cold storage and data centres.



Provide a wide range of specialist products for the retail industry, from small convenience stores to large supermarkets, garden centres, high street fashion outlets to intimate boutiques.



Offering an extensive range of innovative LED Lighting solutions for the Rail sector where reliability, durability and ease of maintenance are paramount.



A broad spectrum of premium lighting systems for all environments; specialising in colour changing solutions for commercial and modern architectural projects.



A registered AATF, catering for all luminaire disposal needs quickly and efficiently via our established UK logistic network in line with WEEE legislation.



A continual research and development division that ensures your environment is controlled with total efficiency utilising the latest in infra-red, daylight, microwave & wireless technologies.

Houghton C of E School

## Schools

School and Academy projects have always been an important part of the Dextra Lighting project portfolio. Dextra Lighting succeeds in bringing value both in terms of product and energy use while also providing longevity and reliability to the client.

Newcastle University

## Universities

Campus life is an exciting mix of learning, social and living environments. Dextra Lighting is able to light these areas in a creative and efficient way to enthuse both students and staff.

## Office

The office environment is too often a place of compliance rather than of creativity. Hence Dextra Lighting endeavours to combine colour, wellbeing and efficiency into the modern work place.

Shoosmiths

North Tyneside Council Block A

## Government / Local Authority

Dextra Lighting have a strong affinity with this sector where we work closely with Authorities & Agencies nationwide to deliver value, product longevity, social responsibility, circular economy upgrades & performance to minimise embodied and operational carbon.



Gatwick Airport

### Airports

Airports are a high activity, 24 hour operation that demand specialist product and lighting control knowledge. Dextra Lighting are ideally placed to accommodate the needs of Airports both for refurbishment and new build.



Ealing Hospital

### Health

The Health sector has a hugely diverse array of environments in which lighting is required. Dextra Lighting works side by side with this sector to deliver reliability and value on energy efficiency projects, new builds and lighting of specialist areas.

Draper Tools

### Warehouses & Logistics - Low Level

Dexeco offer a range of intelligent luminaires for low level storage areas, all of which can be supplied bulk packed to minimise on-site waste. Various wattage and optic styles, in both IP20 or impact resistant IP65, combined with various integral emergency options provide both low energy and low glare solutions.

Regatta

### Warehouses & Logistics - High Level

Combining the latest LED technology with precision optics ensures that both the horizontal and vertical working surfaces receive even illumination across varying aisle widths. Sensor options range from integral stand-alone operation to full central cloud control providing the greatest energy reduction and automatic emergency testing compliance.

## Food Production

Food production areas often require additional consideration when it comes to providing lighting solutions. Ensuring that products do not act as dust traps and are designed to withstand the varied operating temperatures and the cleaning and maintenance regimes that are often in place.

Brakes

## Storage

Dexeco offer a complete range of both high and low level lighting products for food storage applications. Ambient to  $-40^{\circ}\text{C}$  operation combined with specialist controls ensures we have a solution to cover the full range of temperature controlled environments.

Arla



Sainsbury's

Co-op

Working in partnership with some of the country's largest supermarket chains, Dexretail have developed a wide range of bespoke LED solutions that have been tailored to the specific needs of their businesses.

The continual surge in convenience shopping and the growing trend towards fresh locally sourced produce has changed the way in which retailers present their products. Dexretail have worked with a number of convenience chains, helping them to create contrast and theatre by reducing the ambient lighting and increasing the accent lighting within their stores.

The role of lighting in fashion cannot be overstated because, when used correctly, you can create a compelling brand identity and an exciting atmosphere for your customers to explore.



Ben Sherman

Lighting sets the tone, the scene, it guides, it attracts, stimulates and delights. Dexretail have used lighting to help our clients create stores that are not just an engaging place to shop, but an exciting and immersive place for children to play too.



Entertainer



TK Maxx

Bravissimo

Creating a stimulating environment with the correct look and feel is undoubtedly important but this does not have to be at the expense of energy. We have helped retailers to improve and transform stores across Europe whilst delivering substantial energy reductions that provide on-going benefits.

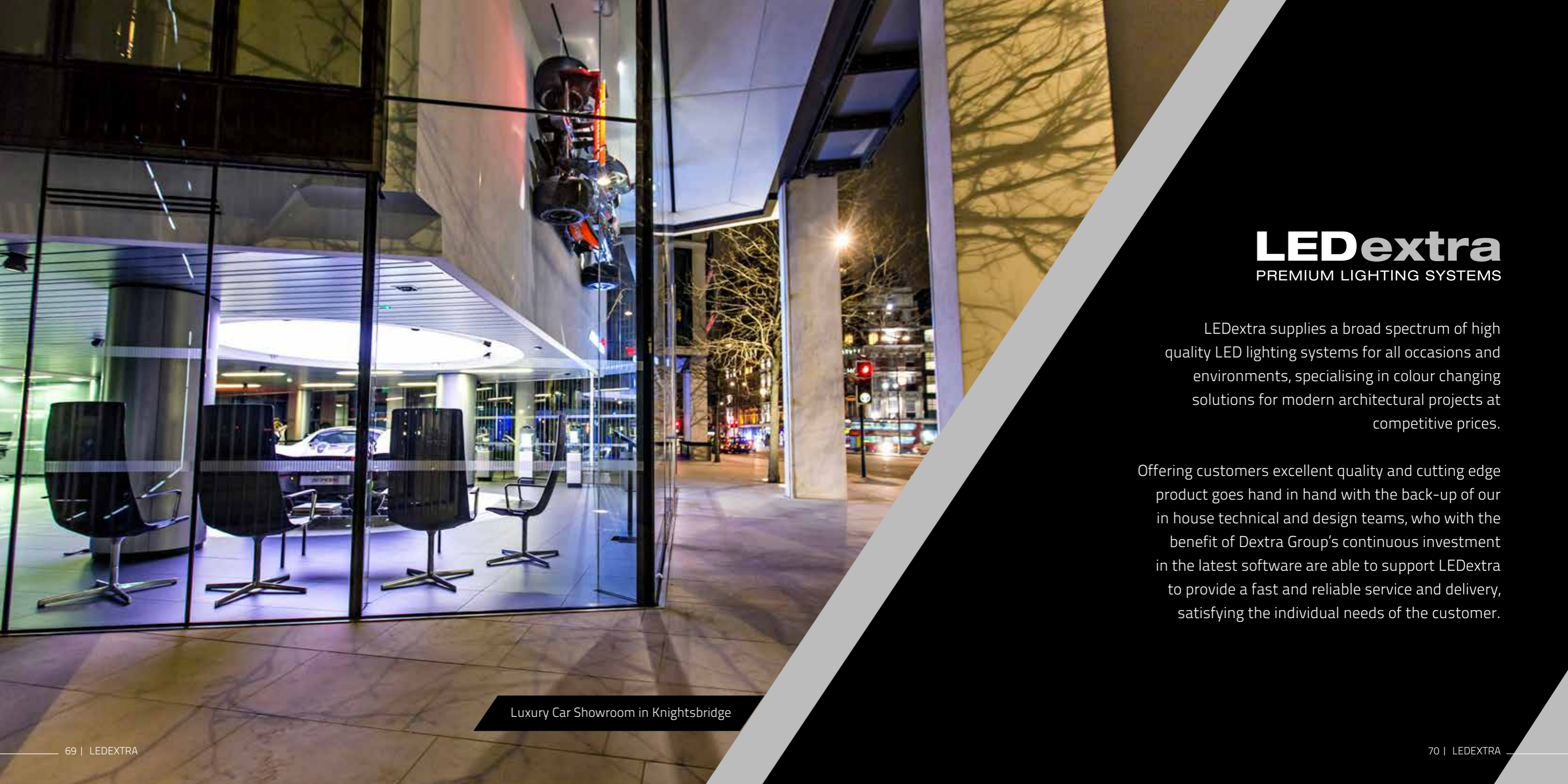
Using the latest LED technology Dexretail have helped a number of our high street clients enhance the visual impact of their clothing, making whites appear whiter and colours seem more vibrant. Our products have the ability to display skin tones more naturally, make colours pop, textures stand out and give finishes more depth and lustre.

### Train Stations

Train stations are often a hive of activity, when in use they should be well illuminated to provide clear visibility for passengers during the day and night. A well-lit station will help to reduce accidents, vandalism and crime ensuring that travellers feel comfortable and safe when navigating these bustling environments.

### Maintenance Depots

are demanding and dangerous environments that require carefully considered lighting solutions to help safeguard the security and well-being of the train care operatives.



# LEDextra

PREMIUM LIGHTING SYSTEMS

LEDextra supplies a broad spectrum of high quality LED lighting systems for all occasions and environments, specialising in colour changing solutions for modern architectural projects at competitive prices.

Offering customers excellent quality and cutting edge product goes hand in hand with the back-up of our in house technical and design teams, who with the benefit of Dextra Group's continuous investment in the latest software are able to support LEDextra to provide a fast and reliable service and delivery, satisfying the individual needs of the customer.

Luxury Car Showroom in Knightsbridge

## Car Parks

Lighting can play a pivotal role in changing our perception of our surrounding architecture without the need to add or remove a brick. LEDextra are able to design and commission lighting systems for car parks where luminaires can be easily and accurately programmed to produce a range of fixed or dynamic colour-changing effects on to the car park's walls and facade. Alerts can be set to automatically trigger lighting show playback on specific days such as St. George's Day, Valentine's Day and during the Christmas festivities.



Isambard Brunel Car Park – Portsmouth



AICO Centre of Excellence

## Corporate Branding

LEDextra are able to design and deliver an attractive and high performing solution that helps reinforce company branding / image using the latest in LED technology and flexible wireless controls to support a variety of events and activities.



A nationwide, reliable and efficient resource for all recycling of luminaire lighting products.

Dexreco Ltd., a registered AATF, caters for all luminaire disposal needs quickly and efficiently via our established UK logistic network; a responsibility that the end client can do without. Using Dextra Group's own liveried fleet of vehicles, complete with Manitous for self loading, Dexreco collects old product from site at the client's convenience. Virtually all collections are made by Dextra Group vehicles on a "back load" meaning that instead of a vehicle returning empty after making a delivery, it will stop off and make a collection. This effectively halves the amount of carbon pollution caused by the transportation of the end of life luminaires.



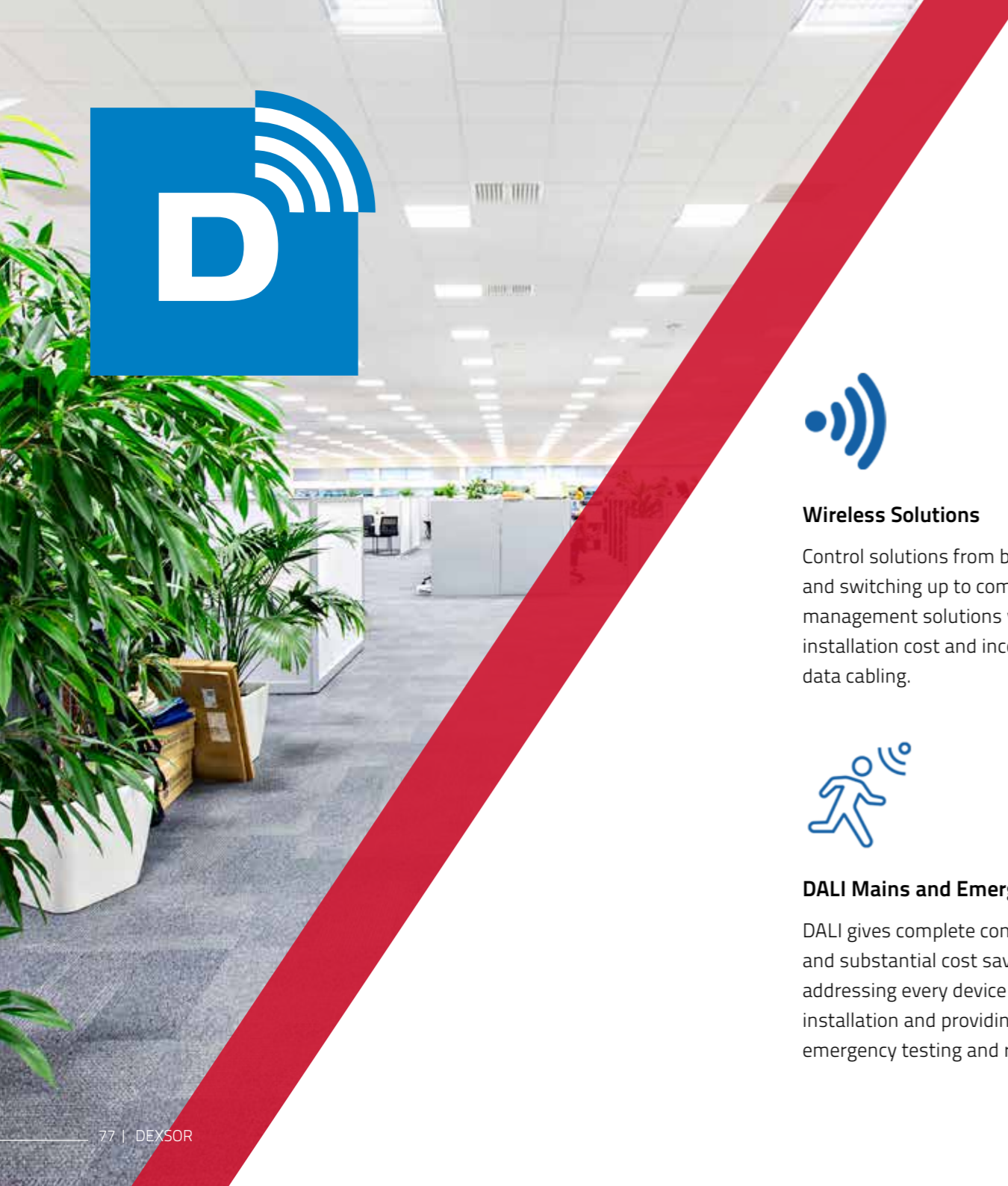
# Dexsor

DETECTION

With rising energy costs and pressure for businesses to reduce their carbon footprint there is ever increasing demand for intelligent controls within the lighting industry.

Dextra Group recognised a unique opportunity not only to incorporate such controls into our product ranges but to develop a bespoke range of controls designed specifically for luminaire types and application areas allowing us to tailor sensor performance and functionality to the environment. Dexsor was established with this principal in mind, and from this premise a wide range of unique sensors have been developed for applications as wide ranging as offices, schools and hospitals to logistics and cold storage.





#### **Wireless Solutions**

Control solutions from basic dimming and switching up to complete building management solutions without the installation cost and inconvenience of data cabling.



#### **Integral Sensors**

Sensors mounted integrally to our luminaires suitable for a range of mounting heights and incorporating features such as presence detection and daylight regulation.



#### **Standalone Sensors**

Standalone sensors designed to operate groups of luminaires. Suitable for a range of mounting heights with features such as presence detection and daylight regulation.



#### **Programmers**

Our programmers are designed to allow simple commissioning and adjustment of our sensor range.



#### **DALI Mains and Emergency**

DALI gives complete control and substantial cost savings by addressing every device on your installation and providing automated emergency testing and reporting.



#### **White Tunable**

Natural daylight colour temperatures vary from warm white at dawn/dusk to cool white at noon. White tunable replicates this, offering many health benefits.



#### **Marshalling Boxes**

Offering installation time and cost savings. Allows luminaire groups to be linked with controls via plug & socket connections with no need to wire terminals.



#### **Leads and Accessories**

Offering a substantial cost and time saving on installations with plug & socket connections eliminating the need to individually wire terminals.

# LEDex

LIGHT ENGINES

We design and manufacture our own bespoke LED cards, using the latest high efficiency chips.

We have four **SMT machines** enabling us to place **750,000 LED chips per day** across an average of 10,000 boards.

**Provides us greater flexibility** as we can now design the LED source around the luminaire.

Optimised to deliver the **lumen output required** whilst working within the ideal operating window of the driver.

Over populating the card and under running the chips **increases efficiency and extends the life.**



Trading for nearly 50 years, Dextra Group is the largest privately owned lighting manufacturer in the UK, establishing themselves as specialists in various sectors such as retail, commercial, airports and logistics.

Using the latest LED technologies, we create standard, bespoke and retrofit lighting solutions for applications ranging from offices, healthcare, education and retail through to warehousing, manufacturing, transport and specialist colour change options.

Dextra Group are proud to boast an impressive array of cutting-edge manufacturing equipment and technologies, coupled with an enviable reputation for our ability to offer industry leading delivery times from concept through to delivery in a matter of weeks.

We have a commitment to reducing our environmental impact and a long-term strategy to improve the local communities in which we operate.

Sustainability, innovation and technology are at the core of our business.

As a company we aspire to go 'Above and Beyond' and remain at the forefront of the lighting industry.



This E-brochure has been created to provide an introduction to Dextra Group's Head Office facilities and market sectors the company specialises in.

Detailed information on products, case studies, awards and accreditations along with our sustainability and environmental ethos can be found on our website [dextragroup.co.uk](https://dextragroup.co.uk)



T: (+44) 01747 858100  
E: [enquiries@dextragroup.co.uk](mailto:enquiries@dextragroup.co.uk)  
[dextragroup.co.uk](https://dextragroup.co.uk)

Designed by [designjam.co.uk](https://designjam.co.uk)